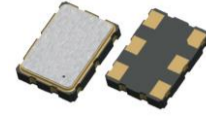


## Features

- Typical 7.0 x 5.0 x 1.3 mm ceramic SMD package.
- Conforms to AEC-Q200
- Output frequency up to 166MHz
- Tri-state enable/disable.

## Typical Application

- xDSL, WLAN, Fiber/10G-Bit Ethernet
- Notebook, PDA
- PC main board, VGA card



## BS0507A Series

Parameter	3.3v		2.5V		1.8V		Unit	Conditions
	Min.	Max.	Min.	Max.	Min.	Max.		
Supply Voltage Variation	VDD-10%	VDD+10%	VDD-10%	VDD+10%	VDD-10%	VDD+10%	V	
Frequency Range	0.0137	166	0.0137	133	0.0137	125	MHz	
Supply Frequency	2.048, 25, 26, 27, 50, 66, 667, 100, 125						MHz	
Supply Current	-	1	-	1	-	1	mA	13.7kHz~70kHz
	-	10	-	8	-	7		0.3125MHz~35.328MHz
	-	20	-	18	-	15		30MHz~75MHz
	-	35	-	30	-	25		75MHz~133MHz
	-	45	-	40	-	-		≥133MHz
Output Level (CMOS)	2.97	-	2.25	-	1.62	-	V	Output High
	-	0.33	-	0.25	-	0.18		Output Low
Transition Time: Rise/Fall Time	-	50	-	50	-	50	nSec	13.7kHz~70kHz
	-	5	-	5	-	5		0.3125MHz~100MHz
	-	3	-	3	-	3		≥100MHz
Tri-State Mode (Input to Pin 1)	2.31	-	1.75	-	1.26	-	V	Enable
	-	0.99	-	0.75	-	0.54		Disable
Standby Current	-	10	-	10	-	10	uA	
Output Drive Capability (CL)	-	15	-	15	-	15	pF	
Period Jitter(Pk-Pk)	-	40	-	40	-	40	pSec	
RMS Phase Jitter	-	1	-	1	-	1	pSec	Integrated 12 kHz~20 MHz
Start Time	-	5	-	5	-	5	mSec	
Aging	-	±3	-	±3	-	±3	ppm	@ 25°C, First Year
Storage Temp. Range	-55	125	-55	125	-55	125	°C	
FREQ. STABILITY vs. TEMP. RANGE		±20ppm		±25ppm		±50ppm		
	-10~+60	Available		Available		Available		
	-20~+70	Conditional		Available		Available		
	-40~+85	Conditional		Available		Available		
	-40~+125	Not Available		Not Available		Available		

**Note: not all combination of options are available. Other specifications may be available upon request.**

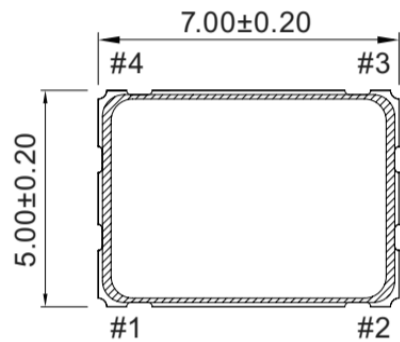
## Reliability

Parameter	Condition
Stress Test	IEC60068, GJB360B
Test	IEC60068, GJB360B
EMC Test (ESD)	IEC61000, JESD22
Solderability	EIA/JESD22-B102-C
Contact Pads	Gold over Nickel
RoHS	RoHS Directive 2011/65/EU Annex II Recasting 2002/95/EC

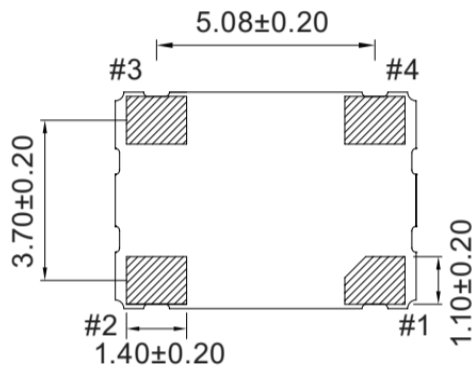
## Outline Dimension & Pin Connections

Unit:  
mm

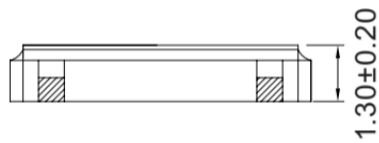
[ TOP VIEW ]



[ BOTTOM VIEW ]



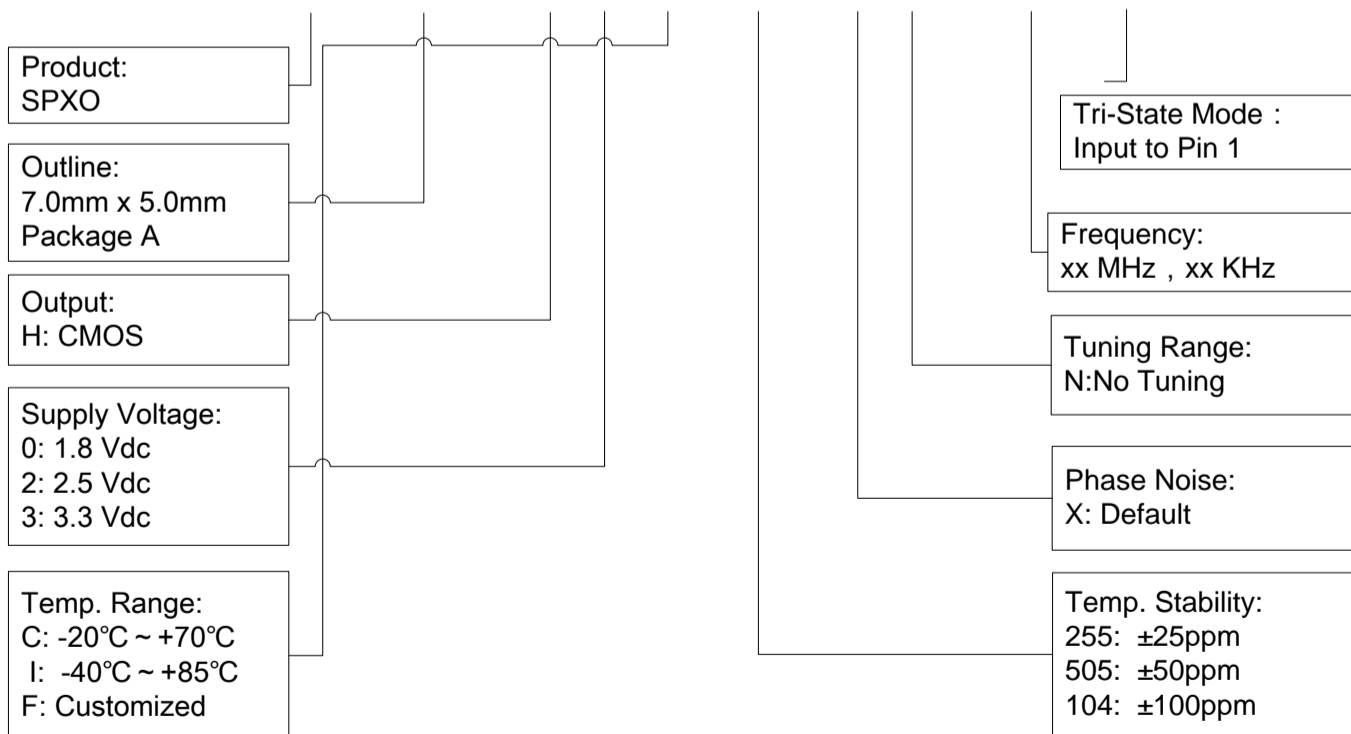
[ SIDE VIEW ]



Pin#	Function
1	Tri-State
2	GND
3	Output
4	VDD

## Ordering Guide

BS0507A X X X XXX X XXX.XX X



**Example: BS0507AD3I505CN20**

### Disclaimer

Xtaltq Technologies Co., Limited reserves the right to make changes to the product(s) and/or information contained herein without notice. No liability is assumed as a result of their use or application. No rights under any patent accompany the sale of any such product(s) or information.